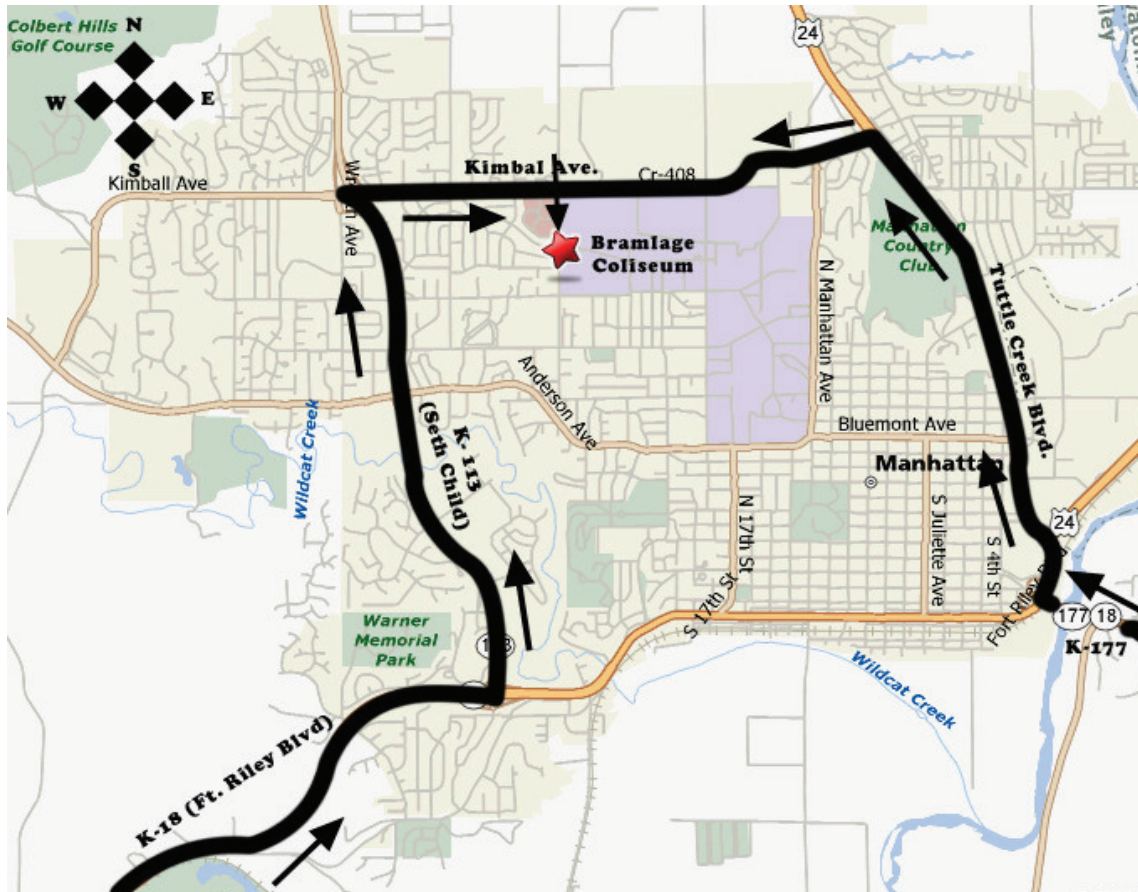


Alternate Parking Plan

Directions to the GA and VIP Parking Lot (Bramlage Coliseum)

In the event the Country Stampede parking lots become unusable due to heavy rain the following plan will be implemented. Patrons will be shuttled to and from the Country Stampede Festival. Each patron will obtain a shuttle pass from a Country Stampede parking employee at the alternate parking site (Bramlage Coliseum), before boarding the shuttle.



Directions from 1-70 West (from Topeka):

*Exit 313: 9 miles north on K-177 to Manhattan, K-177 to Tuttle Creek Blvd & US-24 north to Kimball Ave on left in approx 3 miles. Take Kimball till you see Bramlage Coliseum on South side.

Directions from 1-70 East (from Salina):

* Exit 303: (Ogden/Manhattan Exit) To K-18 (Ft. Riley Blvd) east to K-113. North on K-113 (Seth Child Rd) to Kimball Ave exit on right. Kimball Ave till you see Bramlage Coliseum on South side.